

indicating moisture traps

**Series 8012, 8020, & 8040, 8050**

4

**Description**

These units are designed to remove water, oil and organics from gases commonly used as gas chromatography carrier gases. They are constructed from Lexan® polycarbonate tubing with aluminum end caps sealed with Viton® o-rings, except for the 8050 which has a solid aluminum housing and is thus non-indicating. All units are filled with a mixture of molecular sieve 13X and indicating molecular sieve 4A. These are the highest capacity molecular sieves available and the preferred choice for gas drying. The blue indicating sieves turn buff color at 20% relative humidity.

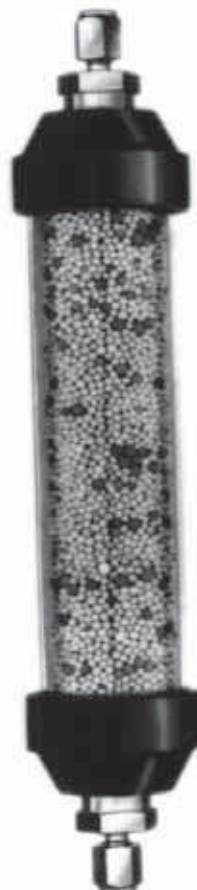
**Features**

- Reduces water to less than 20 ppb.
- Available in 3 sizes (120 cc, 200 cc, 400 cc, 1600 cc) that can easily be refilled.
- Inlet and outlet o-ring sealed connectors are equipped with 40 micron sintered stainless steel frits to prevent particulates from entering your system.
- Mixed spherically shaped 13X and 4A absorbents provides superior bed packing with less resistance to flow.
- Mounting clip available for convenient installation.
- Moisture removal capacity:
 

8012	21.6 grams
8020	36.0 grams
8040	72.0 grams
8050	132 grams
- Dimensions:
 

8012-2 or -4	1.5" O.D. x 9.0" long
8020-2 or -4	1.5" O.D. x 12.5" long
8040-2 or -4	1.75" O.D. x 17.5" long
8050-8	2 3/8" O.D. x 17" long
- Working Pressure:
 

8012, 8020, 8040	125 psig
8050	250 psig



8012C Mounting Clip

Gas traps should be mounted in a vertical position to ensure proper contact of the gas with the adsorbent. Use model 8012C, 8040C or 8050C mounting clip with 8012, 8020 and 8040 Series moisture traps.

**Ordering Information**

Model	Capacity	Connections
8012-2*	120 cc	1/8" tubing compression fitting
8012-4*	120 cc	1/4" tubing compression fitting
8020-2*	200 cc	1/8" tubing compression fitting
8020-4*	200 cc	1/4" tubing compression fitting
8040-2*	400 cc	1/8" tubing compression fittings
8040-4*	400 cc	1/4" tubing compression fittings
8040R	400 cc	Provides enough for three 120 cc, two 200 cc, or one 400 cc refill
8050-8*+	735 cc	1/2" tubing compression fitting
8050R	1500 cc	provides enough for two refill
8012C		for mounting 8012 and 8020 units
8040C		for mounting 8040 units only
8050C		for mounting 8050 units only

+ 8050 is a non-indicating trap.

\* Available with stainless steel compression fittings - add "SS: to part number.